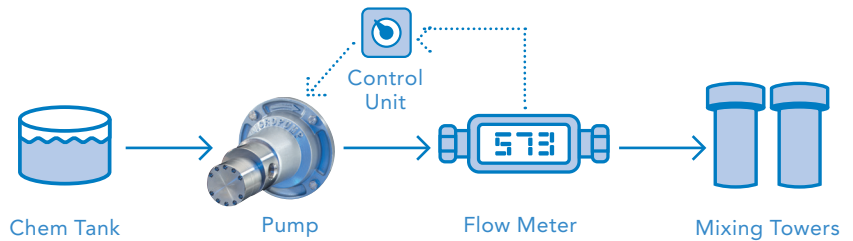




Pulp & Paper: Bleaching

In the paper manufacturing process, wood pulp leaving the digester wash unit often must be bleached to attain the desired level of paper whiteness. Bleach plants whiten pulp through three to five stages of bleaching and water washing.

Micropump pumps are used in these applications to deliver the appropriate bleaching agent and to maintain the proper chemical balance in the bleaching towers.



Micropump pumps deliver smooth, controlled flow of whitening agents to the bleaching towers.

PUMPING REQUIREMENTS	MICROPUMP SOLUTIONS
FLOW RATE: 0.050 to 18.9 L/min (0.79 to 300 USG/hr) flow rates	We have variable speed pumps with flows from 0.158 to 42.9L/min (2.5 to 680 USG/hr)
CHEMICAL RESISTANT PUMP MATERIALS	Our pump construction materials stand up to most pulp bleaching chemicals
PRECISE FLOW CONTROL	We offer positive displacement gear pumps for precise metering of bleaching agents
LEAK-FREE OPERATION	Our pumps have magnetic drives, so no shafts penetrate the pump cavity, eliminating leak-prone dynamic shaft seals
MAINTAINABILITY	We offer Service Kits for easy field serviceability

MICROPUMP PRODUCTS OPTIMIZED FOR THIS APPLICATION

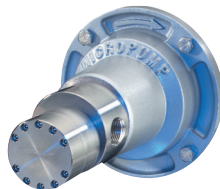
Micropump cavity style pumps are commonly used for this application. Series GJ for lower flow, and Series GL or GN for higher flows. All pump base materials are 316 SS with PTFE wetted materials.



SERIES GJ

MAGNETIC DRIVE GEAR PUMP

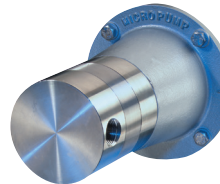
FLOW RATE: .158 to 6.8L/min (2.5 to 107 USG/hr)
MAX DIFFERENTIAL PRESSURE: 80 psi (5.6 Bar)
MAX SYSTEM PRESSURE: 300 psi (21 Bar)
WETTED MATERIALS: 316SS and PTFE
DRIVES: NEMA, IEC, EagleDrive™ and Micropump drive mounts



SERIES GL

MAGNETIC DRIVE GEAR PUMP

FLOW RATE: 2.3 to 26.6L/min (36.5 to 421 USG/hr)
MAX DIFFERENTIAL PRESSURE: 125 psi (8.6 Bar)
MAX SYSTEM PRESSURE: 1500 psi (103 Bar)
WETTED MATERIALS: 316SS and PTFE
DRIVES: NEMA, IEC, drive mounts



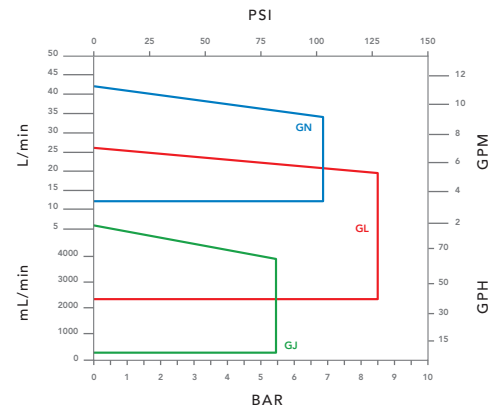
SERIES GN

MAGNETIC DRIVE GEAR PUMP

FLOW RATE: 12.3 to 43L/min (194 to 860 USG/hr)
MAX DIFFERENTIAL PRESSURE: 100 psi (6.9 Bar)
MAX SYSTEM PRESSURE: 1500 psi (103 Bar)
WETTED MATERIALS: 316SS and PTFE
DRIVES: NEMA, IEC, drive mounts

PERFORMANCE SUMMARY

This chart indicates optimal operating ranges for recommended products.



MICROPUMP ADVANTAGE

The unparalleled quality, performance record, reliability and long operating life of Micropump pumps and our extensive engineering expertise make Micropump a vital partner in this demanding market.

MICROPUMP

Micropump, Inc | A Unit of IDEX Corp. | 1402 NE 136th Avenue • Vancouver, WA 98684

T 800.671.6269 • +1.360.253.2008 | F +1.360.253.8294 | info.micropump@idexcorp.com | www.micropump.com

ACTUAL PERFORMANCE MAY VARY. Specifications are subject to change without notice. ©2015 Micropump, Inc., A Unit of IDEX Corporation. Micropump and the Micropump logo are registered trademarks of Micropump, Inc.

REV. 10/17